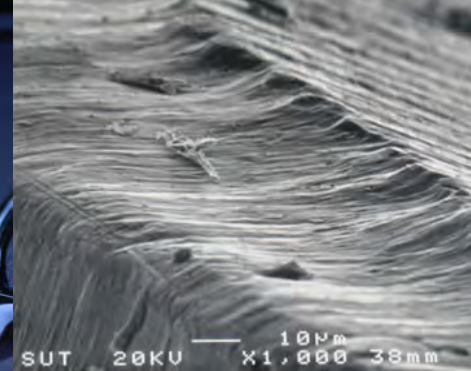
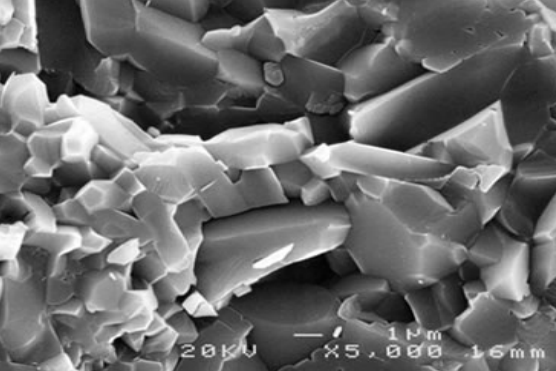
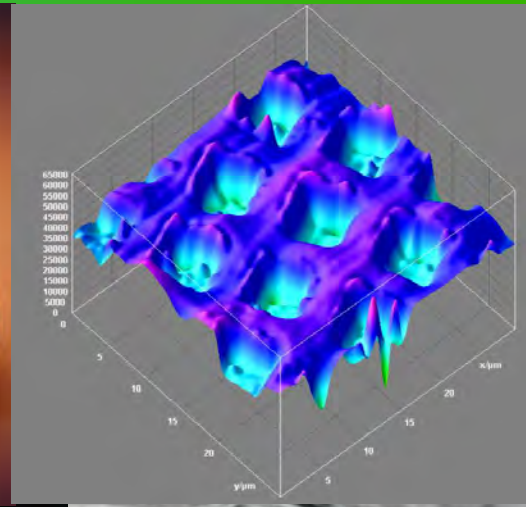
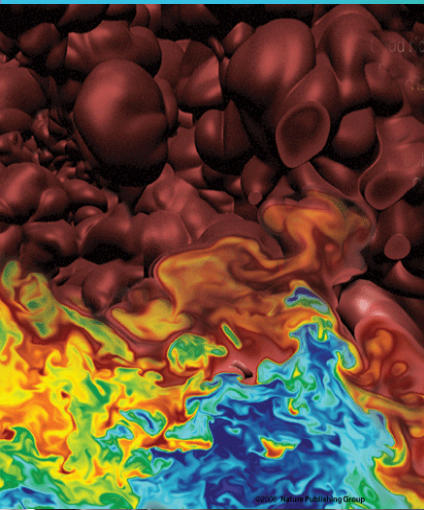


National Tribology Conference 2009

4 - 5 May 2009, Rimba Ilmu,
University of Malaya



Organized by

Department of Mechanical Engineering
University of Malaya, Kuala Lumpur
and
Malaysian Tribology Society (MYTRIBOS)



Proceedings of the
National Tribology Conference 2009

(NTC2009)

4-5 MAY 2009

RIMBA ILMU
UNIVERSITY OF MALAYA
KUALA LUMPUR

Edited By:

Prof. Dr. Masjuki Hj. Hassan

Prof. Dr. A.S.M.A. Haseeb

Dr. Saidur Rahman

Dr. Mariyam J. Ghazali

Assoc. Prof. Dr. Jahara A. Ghani

Publisher: Dept. of Mechanical Engineering, University of Malaya and Mytribos

Proceedings: National Tribology Conference 2009

ISBN: 978-983-42040-1-3

All rights reserved © 2009. No part of these proceedings shall be reproduced, stored in a retrieval system, or transmitted in any form or by any means, electronic, mechanical, photocopying, recording or otherwise, without prior permission of the copyright holder.

No responsibility is assumed by the publisher for any injury and/or damage to persons or property as a matter of products liability, negligence or otherwise, or from any use or operation of any methods, product, instruction or ideas contained in the material herein.

ISBN 978-983-42040-1-3



List of Papers

Paper No.	Title of Paper	Corresponding Author & E-mail Address	Pages
NTC-2009-001	THE EFFECT OF NATURAL FREQUENCY OF THE PIN ON DISC SET-UP ON THE FRICTION COEFFICIENT OF MILD STEEL	Md. Liakat Ali <i>E-mail: tusharadd@gmail.com</i>	1 - 6
NTC-2009-002	THE EVALUATION OF FRICTION EFFECT OF RBD PALM STEARIN AS COLD METAL FORMING LUBRICANT	S. Syahrullail <i>E-mail: syahruls@fkm.utm.my</i>	7 - 10
NTC-2009-004	MACHINING AND CUTTING SIMULATION: EFFECT OF RAKE ANGLE AND CLEARANCE ANGLE ON WEAR CUTTING INSERT CARBIDE	Y. Hendri <i>E-mail: hyanda@eng.ukm.my,</i>	11 - 17
NTC-2009-005	INVESTIGATION OF TRIBOLOGICAL PERFORMANCES OF DOMESTIC REFRIGERATORS	J. U. Ahamed <i>E-mail: jamal@cuet.ac.bd,</i>	18 - 25
NTC-2009-006	MACHINABILITY OF FCD 500 DUCTILE CAST IRON USING COATED CARBIDE TOOL IN DRY MACHINING CONDITION	A.G. Jaharah <i>E-mail: jaharah@eng.ukm.my</i>	26 - 31
NTC-2009-007	EFFECT OF ROTOR DIAMETER ON THE QUALITY OF ROTOR SPUN YARN	Ranjit Kumar Nag <i>E-mail: nag.ranjit@yahoo.com</i>	32 - 35
NTC-2009-009	TRIBO-CHEMICAL DEGRADATION OF PHENOLIC RESIN IN AUTOMOTIVE BRAKE PAD DURING DRY SLIDING AGAINST MMC	K.M. Shorowordi <i>E-mail: kmshorowordi@iat.buet.ac.bd</i>	36 - 44
NTC-2009-010	DRY SLIDING WEAR CHARACTERISTICS OF SUGARCANE BAGASSE POLYMER CEMENT COMPOSITES	M.A. Ahmad <i>E-mail: mariyam@vlsi.eng.ukm.my</i>	45 - 51
NTC-2009-011	VARIATION IN FATIGUE CRACK GROWTH DUE TO THE GEOMETRICAL AND LOADING EFFECTS	S. M. Beden <i>E-mail: sabah@eng.ukm.my</i>	52 - 57
NTC-2009-012	THE ASSESSMENT OF RHEOLOGICAL MODEL RELIABILITY IN LUBRICATING BEHAVIOUR OF VEGETABLE OILS	Sunny Goh Eng Giap <i>E-mail: sunnyg@umt.edu.my</i>	58 - 65
NTC-2009-013	EFFECT ON FATIGUE PERFORMANCE OF SURFACE TREATED COMPONENTS: AN INVESTIGATION USING FINITE ELEMENT ANALYSIS	Nawar A. Al-Asady <i>E-mail: Nawar2007@gmail.com</i>	66 - 71
NTC-2009-014	EFFECT OF TEMPERATURE ON THE TRIBOLOGICAL PERFORMANCE OF PALM BIODIESEL	M. A. Fazal <i>E-mail: jewel_mme.buet@yahoo.com</i>	72 - 76
NTC-2009-015	THE EFFECT OF CERIUM ADDITION ON WEAR BEHAVIOUR OF EUTECTIC AND HYPOEUTECTIC Al-Si-Mg ALLOY	A.S.Anasyida <i>E-mail: syida_7853@yahoo.com</i>	77 - 80
NTC-2009-017	TRIBOLOGICAL PROPERTIES OF NANOSTRUCTURED YSZ THERMAL BARRIER COATINGS	R.J. Talib <i>E-mail: talibria@sirim.my</i>	81 - 86
NTC-2009-019	WEAR AND FRICTION CHARACTERISTICS OF WASTE VEGETABLE OIL CONTAMINATED LUBRICANTS	M. A. Kalam <i>E-mail: kalam@um.edu.my</i>	87 - 93
NTC-2009-020	TRENDS TO SUBSTITUTE DIESEL WITH TRIBOLOGICAL PROPERTIES ENHANCED BIODIESEL	M.I. Rafiqul <i>E-mail: rafiqum@yahoo.com</i>	94 - 103
NTC-2009-021	EFFECT OF 12-HYDROXYSTEARIC ACID ON THE TRIBOLOGICAL PROPERTIES OF ENVIRONMENTAL FRIENDLY LUBRICANTS	M. Farooq <i>E-mail: farooq_tribo@yahoo.com</i>	104-108
NTC-2009-022	ADHESION AND WEAR BEHAVIOR OF NANOSTRUCTURED TITANIUM OXIDE THIN FILMS	M.M. Hasan <i>E-mail: mmhasan92@yahoo.com</i>	109-115
NTC-2009-024	IONIC TRANSPORT STUDY OF POLYMETHYLMETHACRYLATE BASED SALICYLIC ACID DOPED PROTON CONDUCTING GEL POLYMER ELECTROLYTES	M.I.N. Isa <i>E-mail: ikmar_isa@umt.edu.my</i>	116-118
NTC-2009-025	NEURO-FUZZY GENETIC ALGORITHM	M. Jalali V. <i>E-mail: jalali@inspem.upm.edu.my</i>	119-124

Paper No.	Title of Paper	Corresponding Authors & E-mail	Page
NTC-2009-026	PARASITIC ENERGY SAVINGS IN ENGINES USING NANOLUBRICANTS	R. Saidur <i>E-mail: saidur@um.edu.my</i>	125-133
NTC-2009-027	DESIGNING MATERIALS AGAINST WEAR FOR ORTHOPEDIC BIOENGINEERING SYSTEMS	Zainul Huda <i>E-mail: drzainulhuda@hotmail.com</i>	134-138
NTC-2009-028	WEAR STUDY OF COATED/ UNCOATED HIGH SPEED STEEL ON NI-RESIST CAST IRON USING THE COMBINATION OF IONIC LIQUID AND VEGETABLE OIL-BASED LUBRICANT	M. Husnawan <i>E-mail: m.husnawan@gmail.com</i>	139-143
NTC-2009-029	INVESTIGATION OF THE SWIRL EFFECT ON CAMPRO 1.6L ENGINE USING GT-SUITE	A.K.M. Mohiuddin <i>E-mail: mohiuddin@iiu.edu.my</i>	144-148
NTC-2009-030	MACHINE CONDITION MONITORING TECHNIQUE IS USED TO DETECT THE FAILURE OF ROLLING ELEMENT BEARING FOR ISMECA MACHINES IN PRODUCTION LINE	Andy S.W. Tan <i>E-mail: tansongwee_20052000@yahoo.com</i>	149-156
NTC-2009-031	TRIBOLOGY IN BIOLOGY: BIOMIMETIC STUDIES ACROSS DIMENSIONS AND ACROSS FIELDS	I.C. Gebeshuber <i>E-mail: ille.gebeshuber@ukm.my</i>	157-164

TRIBOLOGY IN BIOLOGY: BIOMIMETIC STUDIES ACROSS DIMENSIONS AND ACROSS FIELDS

I.C. Gebeshuber^{1,2,3,4}, B.Y. Majlis¹ and H. Stachelberger^{2,5}

¹Institute of Microengineering and Nanoelectronics (IMEN), Universiti Kebangsaan Malaysia, 43600 UKM, Bangi, Selangor, Malaysia

²TU BIONIK Center of Excellence for Biomimetics, Vienna University of Technology Getreidemarkt 9/134, 1060 Wien, Austria

³Institut fuer Allgemeine Physik Vienna University of Technology Wiedner Hauptstrasse 8-10/134, 1040 Wien, Austria

⁴AC²T Austrian Center of Competence for Tribology, Viktor Kaplan-Straße 2 2700 Wiener Neustadt, Austria,

⁵Institute of Chemical Engineering & University Service-Center for Transmission Electron Microscopy Getreidemarkt 9/166, 1060 Wien, Austria

Corresponding Author: email: ille.gebeshuber@ukm.my; Tel/Fax: 012 392 9233/03 8925 0439

Abstract

Biomimetics is a field that has the potential to drive major technical advances. It might substantially support successful mastering of current tribological challenges, i.e., friction, adhesion and wear in machines and devices from the meter to the nanometer scale. Science currently goes through a major change, with biology gaining increasing importance. A new Leitwissenschaft that can be called „Biological Engineering“ is evolving. Tribology is omnipresent in biology. Various examples for biological tribosystems across dimensions are introduced to the reader, exemplifying the hierarchical nature of biomaterials, and concepts such as integration instead of additive construction, optimization of the whole instead of maximization of a single component feature, multi-functionality instead of mono-functionality and development via trial-and-error processes. The current state of biomimetics in tribology is reviewed, and possible biomimetic scenarios to overcome current tribological challenges are envisaged (switchable adhesives, micromechanic devices, novel lubricants and adhesives).

Keywords: biological physics, biological tribosystems, biological tribosystems on the micrometer scale, biomaterials, biomimetic concepts, biomimetics, crack redirection, interdisciplinarity, multi-functionality, switchable adhesive molecules, technoscience, tribology in biology

1. Introduction

Biomimetics is a growing field that has the potential to drive major technical advances (see Figure 1). It might substantially support successful mastering of current tribological challenges, i.e., friction, adhesion and wear in machines and devices from the meter to the nanometer scale.

In biomimetics, materials, processes and systems in nature are analysed, the underlying principles are extracted and subsequently applied to science and technology [4][7][3]. This approach can result in innovative new technological constructions, processes and developments. Biomimetics can aid tribologists to manage the specific requirements in systems or product design, especially to create products

and processes that are sustainable and perform well (e.g. to overcome stiction), to integrate new functions, to reduce production costs, to save energy, to cut material costs, to redefine and eliminate “waste”, to heighten existing product categories, to define new product categories and industries, to drive revenue and to build unique brands [4][5][6][7]. Recurrent principles in biological materials and systems are hierarchy and multi-functionality [8][9].

Science currently goes through a large change: in biology more and more causation and natural laws are being uncovered [10]. Biology has changed from being very descriptive to a science that can be acknowledged and understood (in terms of concepts) by tribologists. The amount of causal laws in this new biology (indicated by the ratio of causal

versus correlational knowledge, or the ratio of explanatory versus descriptive knowledge) is steadily growing and a new field that can be called “biological engineering” is emerging. The languages of the various fields of science increasingly get compatible (see Figure 2), and the amount of collaborations and joint research projects between tribologists and biologists have increased tremendously over the last years.

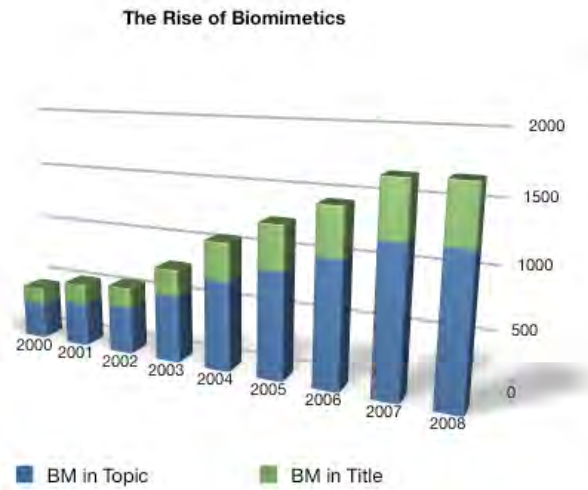


Fig. 1. The number of scientific publications with “biomim*” as topic or in the title.
 Source: ISI Web of Knowledge, Thomson Reuters. [http:// www.webofknowledge.com](http://www.webofknowledge.com)

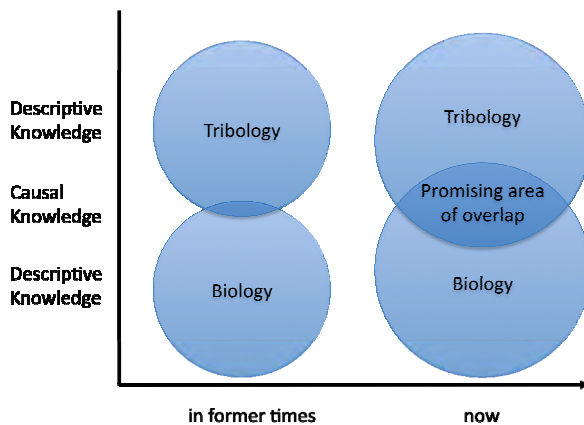


Fig. 2. The increasing amount of causal laws in biology generates promising areas of overlap with mechanical engineering.

Tribology is omnipresent in biology [11]. Examples for biological tribosystems across dimensions are the crack redirection in the horse hoof [12][13], biological tribosystems on the micrometer scale [4][6][14][15][16][17][18], plant wax structures preventing herbivores to adhere to plants [19][20][21] and single switchable adhesive molecules that enable the

rolling adhesion of red blood cells on the endothelium [22][23][24].

Recurrent concepts in all these examples are such integration instead of additive construction, optimization of the whole instead of maximization of a single component feature, multi-functionality instead of mono-functionality and development via trial-and-error processes. Such concepts can easily be transferred to technology, and can be applied by engineers with no knowledge of biology at all [3][7][10].

Biotribological systems can inspire novel tribological approaches [25]. First devices based on bioinspired materials are a technique for cell separation inspired by adhesion of white blood cells [26][27], devices inspired by the hierarchical dry adhesive in the Gecko’s foot [28][29], such as wall-climbing robots; and artificial hierarchical as well as novel adhesives [30].

2. Materials and Methods

2.1. Biomimicry Innovation Method

The Biomimicry Innovation Method is applied to identify biological systems, processes and materials that can inspire novel technological approaches concerning tribological issues. Biomimicry is an innovation method that seeks sustainable solutions by emulating nature’s time-tested patterns and strategies. The goal is to create products, processes, and policies - new ways of living - that are well adapted to life on earth over the long haul.

The Biomimicry Innovation Method (© Biomimicry Guild, Helena, MT, USA 2008, <http://www.biomimicryguild.com/>) involves specifically trained biologists as well as engineers, natural scientists, architects and/or designers from universities or companies. The Biomimicry Innovation Method is for example used in the rainforest (high species variety, high innovation potential) to learn from and emulate natural models).

The steps in the biomimicry process are as follows:

- Identify function,
- biologize the question,
- find nature’s best practices and
- generate product ideas.

Identify Function: The biologists distil challenges posed by engineers/natural

scientists/architects and/or designers to their functional essence.

Biologize the Question: In the next step, these functions are translated into biological questions such as “How does nature manage lubrication?” or “How does nature bond parts together?” The basic question is “What would nature do here?”

Find Nature’s Best Practices: Scientific data bases as well as the surrounding rainforest are used to obtain a compendium of how plants, animals and ecosystems solve the specific challenge.

Generate Process/Product Ideas: From these best practices (90% of which are usually new to clients), the biologists generate ideas for cost-effective, innovative, life-friendly and sustainable products and processes.

2.2. Tribological Challenges investigated

Tribology is a huge field, so only selected current tribological challenges can be dealt with in this manuscript. Areas that are treated here comprise the need for optimally designed rigid micromechanical parts (for 3D-MEMS), pumps for small amounts of liquid (for lab-on-a-chip applications), novel dry and wet adhesives and lubricants (for various applications) and functional material with crack redirection properties (for mechanical protection of viable parts in machinery).

3. Results

3.1. Optimally designed rigid micromechanical parts

Identified functions:

1. Hinges and interlocking devices
2. Click-stop mechanism
3. Springs
4. Parts connected in a chain with adjustable length
5. Movable rigid parts
6. Unfoldable structures
7. Energy dissipation
8. Stability (reinforcement)
9. Pressure resistant containers
10. Fixation

Relating biologized questions:

1. How does Nature mechanically connect hard single cells?

2. How does Nature unfold structures and then irreversibly fix them?
3. How does Nature reversibly store mechanical energy?
4. How does Nature provide stability to chains in turbulent environments?
5. How does Nature optimize moveable parts?
6. How does Nature generate 3D structures from rigid parts?
7. How does Nature dissipate mechanical energy?
8. How does Nature deal with high pressures?
9. How does Nature mechanically fix structures?

Nature’s best practices

1. Diatom chains with mechanical connections between the single cells. Diatoms are unicellular microalgae with a cell wall consisting of a siliceous skeleton enveloped by a thin organic case [31]. The cell walls of each diatom form a pillbox-like shell consisting of two parts that fit within each other. These microorganisms vary greatly in shape, ranging from box-shaped to cylindrical; they can be symmetrical as well as asymmetrical and exhibit an amazing diversity of nanostructured frameworks. These biogenic hydrated silica structures have elaborate shapes, interlocking devices, and, in some cases, hinged structures. The silica shells of the diatoms experience various forces from the environment and also from the cell itself when it grows and divides, and the form of these micromechanical parts has been evolutionarily optimized during the last 150 million years or more (see Figure 3).
2. The diatom species *Corethron pennatum* and *Corethron criophilum* are excellent examples for unfolding structures [34][33][34].
3. The diatom species *Rutilaria grevilleana* and *Rutilaria philippinarum* have structures that might be interpreted as springs [5][35]. However, more detailed investigation is needed to confirm this.
4. *Ellerbeckia arenaria* is a diatom which lives in waterfalls. *E. arenaria* cells form string like colonies which can be several millimeters long and can reversibly be elongated by one third of their original length [16].
5. The diatoms *Melosira sp.* [15], *Solium exsculptum* (Figure 3) and *Ellerbeckia*

arenaria [15] are interesting best practices for optimization of moveable parts in Nature. The diatom species *Solium exsculptum* lived 45 million years ago. Scanning Electron Microscopy images of this Eocene fossil from a deposit at Mors, Denmark reveal that the connections between sibling cells are still in good condition (Figure 3).

6. *Corethron pennatum* and *Corethron criophilum*. The process of new cell formation in these species is highly complex, and involves elaborate mechanisms [32][33].
7. The diatoms *Solium exsculptum* [25][36] and the diatoms *Melosira* sp. [5][34] and *Ellerbeckia arenaria* [37].
8. The green alga *Euglena gracilis* is a single-celled algal species that performs tasks as diverse as sensing the environment and reacting to it, converting and storing energy and metabolizing nutrients, living as a plant or an animal, depending on the environmental constraints. The striated pellicle covering the whole cell is a distinct exoskeletal feature of the *Euglena* species. The pellicle is a proteinaceous structure that provides mechanical stability to the cell, yet it is flexible. Its single strips are connected via interlocking ridges that can slide against each other and are lubricated via biogenic lubricants excreted from pellicle pores. Internal pressures up to several bar cannot break the exquisite pellicle arrangement in these algae (see [38] and references therein).
9. The mechanical click-stop mechanism in *Corethron* is an excellent best practice showing how Nature deals with the task to mechanically fix structures [32][33][34]. Generated product ideas comprise micromechanical optimization of 3D-MEMS structure, methods to obtain 3D structures from fabricated 2D structures, novel methods for energy storage in MEMS, development of (3D) MEMS with moveable parts, methods to obtain 3D structures from fabricated 2D structures, quality assurance of MEMS and novel methods to preventing stiction.

3.2. Pumps for small amounts of liquid

Identified function:

Pumps for small amount of liquids as they are needed in lab-on-a-chip devices and in microchemical reactors.

Biologized question:

How does Nature move fluids?

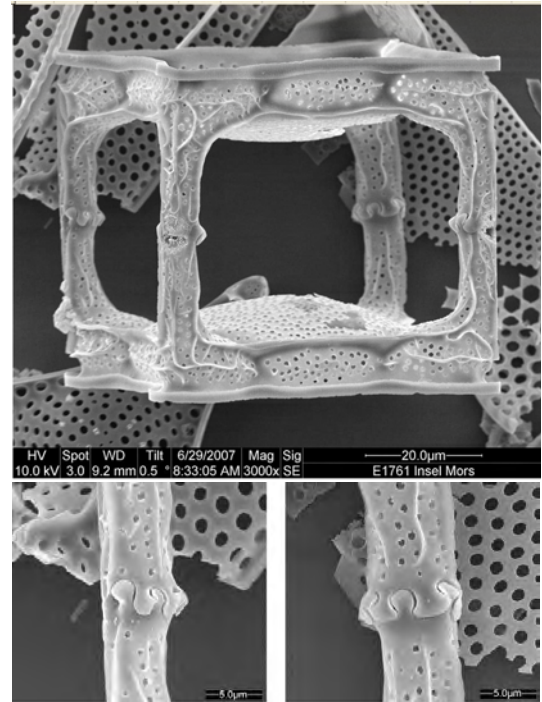


Fig. 3. Biological example for optimally designed rigid micromechanical parts. The sample is from the Hustedt Collection in Bremerhaven, Germany, # E1761. © F. Hinz and R. M. Crawford, reproduced with permission.

Nature's best practices:

Rutilaria philippinarum is a fossil colonial diatom thought to have lived in inshore marine waters (CRAWFORD pers. comm. 2008). In this species, the single diatoms connect by linking spines and by a complex siliceous structure termed the periplekton. These linking structures on the one hand keep the cells together, but on the other hand also keep distance between the cells. The shape of the spines allows expansion of the chain to a certain maximum distance and compression to a minimum distance, in which case there is still some fluid between the cells. The links allow movement of single cells in the chain against or from each other in a rather one-dimensional way [34]. Such elaborated linking mechanisms, inspired the question what would happen to such a diatom colony when subjected to water flow. Computer simulations performed by Srajer and

Gebeshuber suggest that a diatom colony subjected to water flow exhibits some kind of oscillatory movement. This movement might facilitate nutrient uptake of a diatom colony. The inspiring organisms for the computer simulation study are *Rutilaria grevilleana* and *Rutilaria philippinarum* [35]. Oscillatory movement increases the advective diffusion through the surface of the diatoms and therefore increases nutrient supply in a homogeneous nutrient solution [39].

Generated product ideas comprise the development of micropumps for lab-on-a-chip applications.

3.3. Novel dry and wet adhesives and lubricants

Identified functions:

Adhesion (wet, dry, reversible, switchable, selective), lubrication (wet, dry).

Biologized questions:

How does Nature prevent wear?

How does Nature reversibly adhere to structures?

Nature's best practices:

Articular cartilage, the bioactive surface on synovial joints (like the hip, the knee, the elbow, the fingers, the shoulder or the ankle) has a very small friction coefficient. Some groups report friction coefficients for normal synovial joints as low as 0.001 [40][41][42]. Identifying the mechanisms responsible for the low friction in synovial joints has been an area of ongoing research for decades. Furey lists more than 30 theories that have been proposed to explain the mechanisms of joint lubrication [43]. In summary, articular cartilage provides an efficient load-bearing surface for synovial joints that is capable of functioning for the lifetime of an individual.

Generated product ideas comprise improved lubrication strategies in cases where moveable hard parts have to be interconnected.

3.4. Functional material with crack redirecting properties

Identified functions:

Fracture control, crack redirection

Biologized question:

How does Nature tailor-shape wear particles and thereby protect viable parts?

Nature's best practices:

The horse hoof is a system that can tailored the shape of its wear particles. Hoof is an excellent example for a tough natural materials that increases the energy required for tearing by diverting cracks away from their preferred directions of propagation. Macroscopic wear particles from horse hoofs are more often than not of rectangular shape. A horse's hoof is difficult to split vertically. In the hoof, the keratin is arranged in an ordered three-dimensional array such that a crack initiated by a vertical cut will turn and split the material at right angles to the vertical direction [12][13].

Generated product ideas:

Studies of the mechanisms of synthesis of hoof material in the horse can be expected to provide hints for the industrial fabrication of such complex three-dimensional fibrous materials.

4. Conclusions

Current mechanical systems, synthetic adhesives and lubricants are not perfect, and the low friction coefficients in many natural systems are yet to be achieved in artificial systems. Technological innovations, completely new ideas, and unconventional approaches can all be learned from nature. These approaches have been tested and improved upon for millions of years; they are continuously being optimized with respect to their function and environment.

Tribology always have to do with applications and devices. For accelerated scientific and technological breakthroughs the "Three-gaps-theory" was proposed by Gebeshuber and co-workers in 2009 (Fig. 4, [10]): the inventor gap, the innovator gap and the investor gap have to be bridged. Since development always takes a path from the primitive over the complex to the simple, effective or efficient solutions can be envisaged, depending on the time frame provided and the acceleration wanted.

In nature, there is equilibrium between generalists and specialists; there are sources and drains, with natural flow between them. The whole system grows via evolution; there is no static natural system. In humans the necessities are shifted. To advance our system, more visions and a platform for "evangelists" are needed. Interdisciplinary working groups with

generalists as heads, coordinating the specialists, are needed.

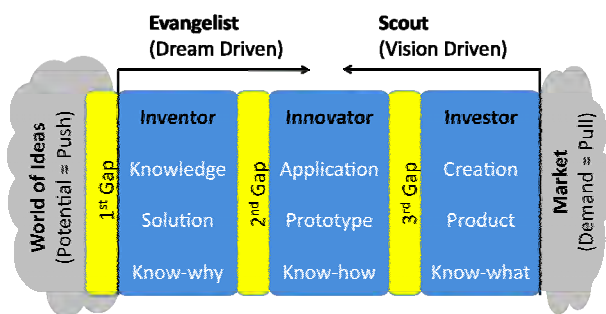


Fig. 4. The Three-Gaps-Theory as proposed by Gebeshuber et al. [10]

At the moment, we do not have such structures. Our scientific system fails because of a lack of competition, the “pull” is missing, we “push”, but industry does not want. Industry does not “pull”, because it needs products and no solutions. Economy needs a vision. Steve Jobs from Apple with the vision of making technology simple is a rare example for successful “pull”. Generally, current economy loses itself in details. Industry lacks visions, science cannot promote its knowledge, there is no platform.

To prevent being trapped in the inventor, innovator or investor gap, a cross dialogue is necessary, a pipeline from “know-why” to “know-how” to “know-what”, from the inventor who suggests a scientific or technological breakthrough to the innovator who builds the prototype to the investor who mass produces the product and brings the product to the consumer. Currently, and this is the main problem, at universities worldwide huge amounts of knowledge are piled up with little or no further usage. We know a lot, we can do relatively little. We need a joint language and a joint vision.

Acknowledgements

Part of this work has been funded by the Austrian *Kplus*-Program via the Austrian Center of Competence for Tribology, AC²T research GmbH, Wiener Neustadt.

Part of this work has been financed by the biomimetics pilot projekt “BioScreen” of the Austrian Society for the Advancement of Plant Sciences.

References

- [1] Bhushan B. “Biomimetics: lessons from nature-an overview”, *Phil. Trans. R. Soc. A* Vol. 367, pp. 1445-1486, 2009
- [2] Bar-Cohen Y. *Biomimetics: Biologically Inspired Technologies*, CRC Press, 2005
- [3] Gebeshuber I.C. and Drack M. “An attempt to reveal synergies between biology and engineering mechanics”, *J. Mech. Eng. Sci.* Vol. 222, pp. 1281-1287
- [4] Gebeshuber I.C., Pauschitz A. and Franek F. “Biotribological model systems for emerging nano-scale technologies”, in: *Proc. 2006 IEEE Conference on Emerging Technologies - Nanoelectronics*, pp. 396-400, 2006.
- [5] Gebeshuber I.C., Stachelberger H. and Majlis B.Y. “Exploring the innovational potential of biomimetics for novel 3D MEMS”, *Int. Conf. Mat. Adv. Technol. ICMAT 2009*, Singapore, July 27 - August 2, 2009.
- [6] Gebeshuber I.C., Stachelberger H. and Drack M. “Diatom tribology”, in: *Life Cycle Tribology*, Eds.: D. Dowson, M. Priest, G. Dalmaz and A.A. Lubrecht, Tribology and Interface Engineering Series, Vol. 48, Series Editor B.J. Briscoe, Elsevier, pp. 365-370, 2005.
- [7] Gebeshuber I.C., Majlis B.Y., Neutsch L., Aumayr F. and Gabor F. “Nanomedicine and Biomimetics: Life Sciences meet Engineering & Physics”, *Proc. 3rd Vienna Int. Conf. Micro- and Nanotech. Viennano09*, pp. 17-23, 2009.
- [8] Fratzl P. and Weinkamer R. “Nature’s Hierarchical Materials”, *Progr. Mat. Sci.* Vol. 52(8), pp. 1263-1334, 2007.
- [9] Vincent J.F.V. “Deconstructing the design of a biological material”, *J. Theor. Biol.* Vol. 236, pp. 73-78, 2005.
- [10] Gebeshuber I.C., Gruber P. and Drack M. “A gaze into the crystal ball - biomimetics in the year 2059”, *J. Mech. Eng. Sci.*, submitted
- [11] Gebeshuber I.C., Drack M. and Scherge M. “Tribology in biology”, *Tribology - Materials, Surfaces & Interfaces*, in press
- [12] Kasapi M.A. and Gosline J.M. “Design complexity and fracture control in the equine hoof wall”, *J. Exp. Biol.* Vol. 200, pp. 1639-1659, 1997.

- [13] Kasapi M.A. and Gosline J.M., "Micromechanics of the equine hoof wall: optimizing crack control and material stiffness through modulation of the properties of keratin", *J. Exp. Biol.* Vol. 202, pp. 377-391, 1999.
- [14] Crawford R.M. and Gebeshuber I.C. "Harmony of beauty and expediency", *Science First Hand* Vol. 5(10), pp. 30-36, 2006.
- [15] Gebeshuber I.C. and Crawford R.M. "Micromechanics in biogenic hydrated silica: hinges and interlocking devices in diatoms", *J. Eng. Tribol.* Vol. 220(J8), pp. 787-796, 2006.
- [16] Gebeshuber I.C., Stachelberger H. and Drack M. "Diatom bionanotribology - Biological surfaces in relative motion: their design, friction, adhesion, lubrication and wear", *J. Nanosci. Nanotechnol.* Vol. 5(1), pp. 79-87, 2005.
- [17] Gebeshuber I.C., Kindt J.H., Thompson J.B., Del Amo Y., Stachelberger H., Brzezinski M., Stucky G.D., Morse D.E. and Hansma P.K. "Atomic force microscopy study of living diatoms in ambient conditions", *J. Microsc.* Vol. 212(Pt3), pp. 292-299, 2003.
- [18] Gebeshuber I.C., Thompson J.B., Del Amo Y., Stachelberger H. and Kindt J.H. "In vivo nanoscale atomic force microscopy investigation of diatom adhesion properties", *Mat. Sci. Technol.* Vol. 18, pp. 763-766, 2002.
- [19] Gorb E.V. and Gorb S.N. "Attachment ability of the beetle *Chrysolina fastuosa* on various plant surfaces" *J. Entomologia Experimentalis et Applicata* Vol. 105(1), pp. 13-28, 2002
- [20] Gorb E., Haas K., Henrich A., Enders S., Barbakadze N. and Gorb S. "Composite structure of the crystalline epicuticular wax layer of the slippery zone in the pitchers of the carnivorous plant *Nepenthes alata* and its effect on insect attachment", *J. Exp. Biol.* Vol. 208, pp. 4651, 2005.
- [21] Koch K. Dommissie A., Barthlott W. and Gorb S. N. "The use of plant waxes as templates for micro- and nanopatterning of surfaces", *Acta Biomaterialia* Vol. 3(6), pp. 905-909, 2007.
- [22] Popel A.S. and Pittman R.N. "Mechanics and transport in microcirculation", In: J.D. Bronzino (Ed.), *The Biomedical Engineering Handbook: Second Edition*, CRC Press LLC, Boca Raton, chapter 31, pp. 31-1 - 31-12, 2000.
- [23] Patrick C.W., Sampath R. and McIntire L.V. "Fluid shear stress effects on cellular function", In: J.D. Bronzino (Ed.), *The Biomedical Engineering Handbook: Second Edition*, CRC Press LLC, Boca Raton, chapter 114, pp. 114-1 - 114-20, 2000.
- [24] Orsello C.E., Lauffenburger D.A. and Hammer D.A. "Molecular properties in cell adhesion: a physical and engineering perspective", *Trends Biotechnol.* Vol. 19, pp. 310-316, 2001
- [25] Gebeshuber I.C. "Biotribology inspires new technologies", *Nano Today* 2(5), pp. 30-37, 2007.
- [26] Li P.C.H. *Microfluidic lab-on-a-chip for chemical and biological analysis and discovery*, Chromatographic Science Vol. 94, Taylor & Francis / CRC Press, Boca Raton, Florida, 2005
- [27] Sakhalkar HS, Dalal MK, Salem AK, Ansari R, Fu J, Kiani MF, Kurjiaka DT, Hanes J, Shakesheff KM, Goetz DJ. "Leukocyte-inspired biodegradable particles that selectively and avidly adhere to inflamed endothelium *in vitro* and *in vivo*", *Proc. Natl. Acad. Sci. USA* Vol. 100, pp. 15895-15900, 2003.
- [28] Northen M.T. and Turner K.L. "A batch fabricated biomimetic dry adhesive", *Nanotechnology* Vol. 16(8), pp. 1159-1166, 2005.
- [29] Shah G.J. and Sitti M. "Modeling and design of biomimetic adhesives inspired by gecko foot-hairs". In: *IEEE International Conference on Robotics and Biomimetics (ROBIO)*, pp. 873-878, 2004.
- [30] Hansma P.K., Turner P.J. and Ruoff R.S. "Optimized adhesives for strong, lightweight, damage-resistant, nanocomposite materials: new insights from natural materials", *Nanotechnology* Vol. 18, 044026(3p), 2007.
- [31] Round F.E., Crawford R.M. and Mann D.G. "The diatoms: biology and morphology of the genera", Cambridge University Press, Cambridge, UK, 1990.
- [32] Crawford R.M. and Hinz, F. "The spines of the centric diatom *Corethron criophilum*: light microscopy of vegetative cell division", *Eur. J. Phycol.* Vol. 30, pp. 95-105, 1995.

- [33] Crawford R.M., Hinz F. and Honeywill C. "Three species of the diatom genus *Corethron* Castracane: structure, distribution and taxonomy", *Diatom Res.* Vol. 13, pp. 1–28, 1998.
- [34] Gebeshuber I.C. and Crawford R.M. "Micromechanics in biogenic hydrated silica: hinges and interlocking devices in diatoms", *J. Eng. Tribol.* Vol. 220(J8), pp. 787-796, 2006
- [35] Srajer J., Majlis B.Y. and Gebeshuber I.C. "Microfluidic simulation of a colonial diatom chain reveals oscillatory movement", *Acta Botanica Croatia*, in press
- [36] Gebeshuber I.C., Aumayr M., Hekele O., Sommer R., Goesselsberger C.G., Gruenberger C., Gruber P., Borowan E., Rosic A. and Aumayr F. "Bacilli, green algae, diatoms and red blood cells – how nanobiotechnological research inspires architecture", in: *Bio-Inspired Nanomaterials and Nanotechnology* (tentative title), edited by Yong Zhou, Nova Science Publishers 2009, in press
- [37] Schmid A-M.M. and Crawford R.M. "*Ellerbeckia arenaria* (Bacillariophyceae): formation of auxospores and initial cells", *Europ. J. Phycol.* Vol. 36, pp. 307-320, 2001.
- [38] Gruenberger C., Ritter R., Aumayr F., Stachelberger H. and Gebeshuber I.C. "Algal biophysics: *Euglena gracilis* investigated by atomic force microscopy", *Mat. Sci. Forum* Vol. 555, pp. 411-416, 2007.
- [39] Pahlow M., Riebesell U., Wolf-Gladrow D.A. "Impact of cell shape and chain formation on nutrient acquisition my marine diatoms", *Limnol. Oceanograph.* Vol. 42(8), pp. 1660-1672, 1997.
- [40] Linn F.C. "Lubrication of animal joints. I. The arthrotripsometer", *J. Bone Joint Surg. Am.* Vol. 49, pp. 1079-1098, 1967.
- [41] McCutchen C.W. "Mechanism of animal joints: sponge-hydrostatic and weeping bearings", *Nature* Vol. 184, pp. 1284-1285, 1959.
- [42] Unsworth A., Dowson D., Wright V. "The frictional behaviour of human synovial joints - Part 1. Natural joints", *Trans. Am. Soc. Mech. Eng. Seri. F: J. Lubrication Technol.* Vol. 97, pp. 369–376, 1975.
- [43] Furey M.J. "Joint Lubrication", in: J.D. Bronzino (Ed.), *Biomedical Engineering Handbook*, CRC Press, Boca Raton, chapter 21, pp. 21-1 - 21-26, 2000.